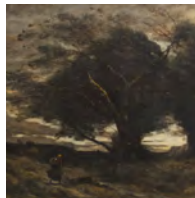


8 CASPAR DAVID FRIEDRICH
Giant Mountains
(View of the
Kleine Sturmbaube
from Warmbrunn)
1810



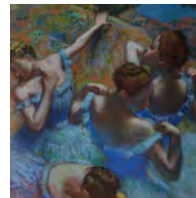
9 JEAN-BAPTISTE-CAMILLE COROT
Gust of Wind
Mid-1860s –
early 1870s



9 JULES BASTIEN-LEPAGE
The Village Lovers
1882



10 ÉDOUARD MANET
In the Bar
1878–1879



10 EDGAR DEGAS
Blue Dancers
Circa 1898



11 PIERRE-AUGUSTE RENOIR
Girls in Black
1880–1882



12 EDVARD MUNCH
White Night.
Aasgardstrand
(Girls on the Bridge)
1866
1902–1903



14 CLAUDE MONET
Luncheon
on the Grass
1866



14 CLAUDE MONET
White Water Lilies
1899



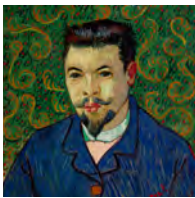
15 PAUL CÉZANNE
Pierrot
and Harlequin
(Mardi Gras)
1888–1890



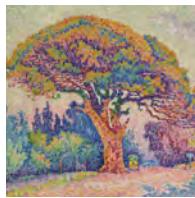
15 PAUL CÉZANNE
Peaches and Pears
Circa 1895



16 VINCENT VAN GOGH
The Red Vineyard
at Arles
(Montmajour)
1888



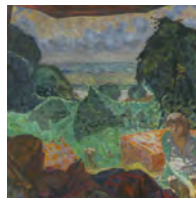
16 VINCENT VAN GOGH
Portrait
of Doctor Rey
1889



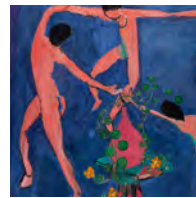
16 PAUL SIGNAC
Pine Tree
at Saint-Tropez
1909



17 PAUL GAUGUIN
Aha oe feii?
(What, Are You
Jealous?)
1892



18 PIERRE BONNARD
Summer in Normandy
Circa 1912



20 HENRI MATISSE
Nasturtiums
with «The Dance» II
1912



20 HENRI MATISSE
Goldfish
1911



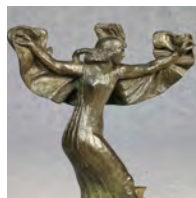
21 PABLO PICASSO
Young Acrobat
on a Ball
1905



21 PABLO PICASSO
Violin
1912



22 ANDRÉ DRAIN
Saturday
Dance with a Veil
Circa 1912



22 EMILE-ANTOINE BOURDELLE
Dance with a Veil
1909

THE PUSHKIN STATE MUSEUM OF FINE ARTS

The Pushkin State Museum of Fine Arts has one of the largest collections of world art in Russia. It was founded in 1898 by Professor Ivan Tsvetaev and opened to the public on 31 May 1912 as The Alexander III Museum of Fine Arts. Today, the holdings of the museum contain around 700 000 artworks from Ancient Egypt and Greece to our day, including paintings, sculptures, works on paper, applied art, archaeological and numismatic artefacts, and photographs.

MUSEUM COMPLEX

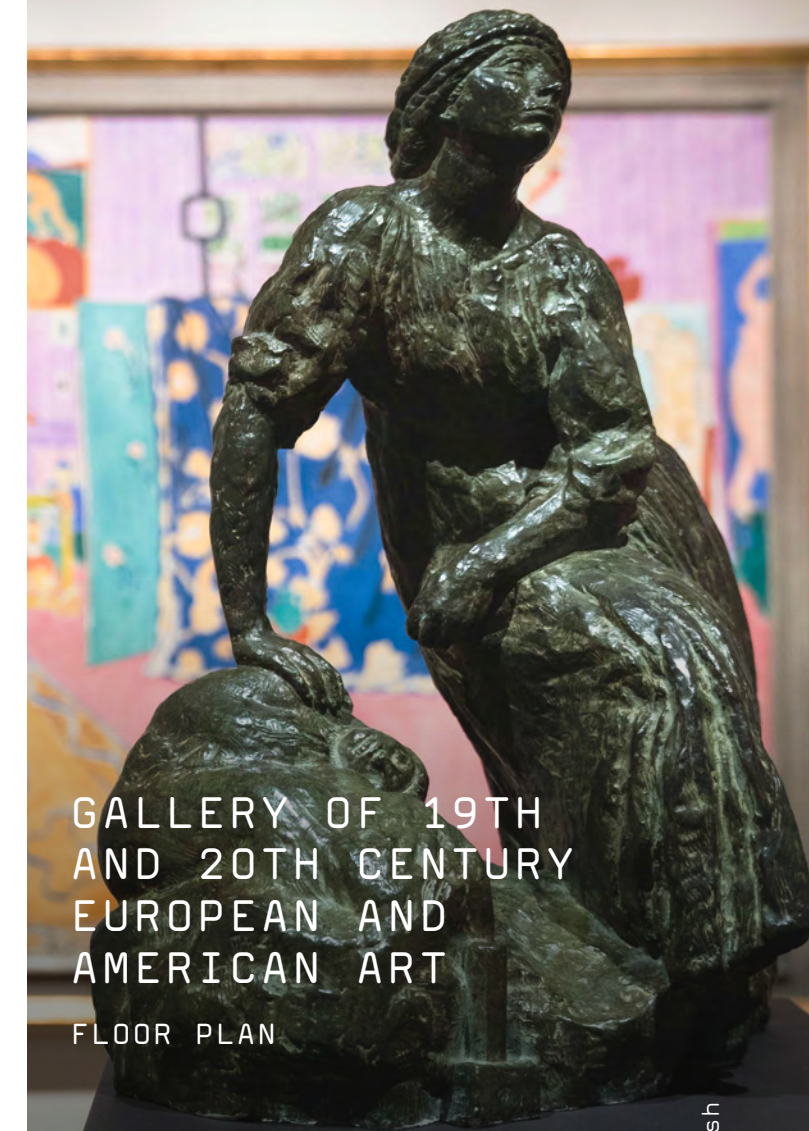


- 1 MAIN BUILDING**
12 Volkhonka St.
- 2 GALLERY OF 19TH AND 20TH CENTURY EUROPEAN AND AMERICAN ART**
14 Volkhonka St.
- 3,4 MUSEION EDUCATIONAL CENTER; PUSHKIN.U**
6 Kolymazhny Lane, Bldg. 2 (entrance from Maly Znamensky Lane)

Answering machine: +7 495 609 95 20,
Information: +7 495 697 95 78, +7 495 697 15 46
Guided tours reservation: +7 495 697 74 12
www.pushkinmuseum.art



THE PUSHKIN
STATE MUSEUM
OF FINE ARTS



GALLERY OF 19TH
AND 20TH CENTURY
EUROPEAN AND
AMERICAN ART
FLOOR PLAN

GALLERY OF 19TH AND 20TH CENTURY EUROPEAN AND AMERICAN ART



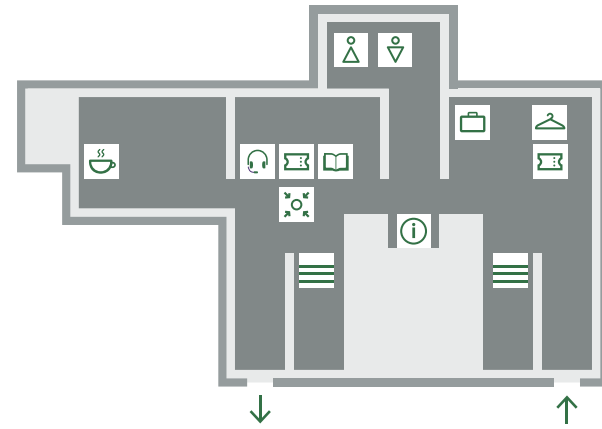
The permanent collection of the Gallery of 19th and 20th Century European and American Art comprises masterpieces by French Impressionists and Post-Impressionists and masters of the early 20th century, which once belonged to the legendary Moscow collectors Sergei Shchukin and Ivan Morozov. It includes world-famous works by Monet, Renoir, Degas, Cézanne, Van Gogh, Gauguin, Matisse and Picasso, as well as paintings and sculptures from other artistic movements of the 19th and 20th centuries: Romanticism, Realism, Academicism, Symbolism and Abstractionism. The permanent collection is located on the second and third floors of the wing of a mansion that belonged to the princely Golitsyn family from the 17th to the 19th centuries. The first floor is used for temporary exhibitions.











OPENING HOURS OF THE GALLERY OF 19TH AND 20TH CENTURY EUROPEAN AND AMERICAN ART (14 Volkhonka St.):

Tuesday, Wednesday –
from 11 a.m. to 8 p.m., last entry at 7 p.m.;
Thursday, Friday –
from 11 a.m. to 9 p.m., last entry at 8 p.m.;
Saturday, Sunday –
from 10 a.m. to 8 p.m., last entry at 7 p.m.;
closed on Mondays.

Last admission and ticket sales 1 hour before closing; exhibition rooms begin to shut down 15 minutes before closing.

GROUND FLOOR



-  GUIDED TOURS MEETING POINT
-  INFORMATION
-  TICKET OFFICE
-  AUDIO AND RADIO GUIDES
-  MUSEUM SHOP
-  CAFÉ
-  CLOAKROOM
-  LOCKERS
-  WC
-  STAIRS

It is prohibited to:

- Touch the exhibits;
- Consume food and drink;
- Use flash or selfie sticks and conduct photoshoots;
- Talk loudly (including on a mobile phone) or listen to audio guides using external speakers.

Outerwear must be left in the cloakroom, and items larger than 30 x 40 x 20 cm in the storage room.

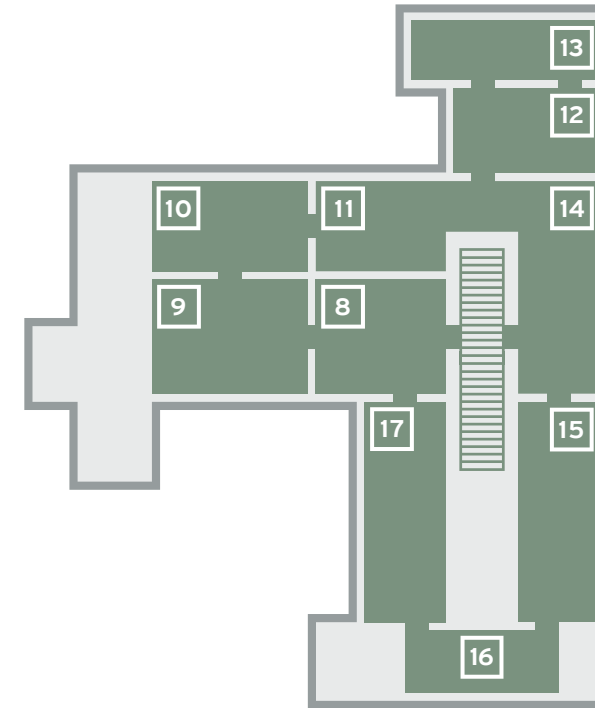
Visitors who need assistance getting around the building or carrying baby strollers on the stairs, or who want to use museum equipment for people with limited mobility should contact the information desk.



FIRST FLOOR

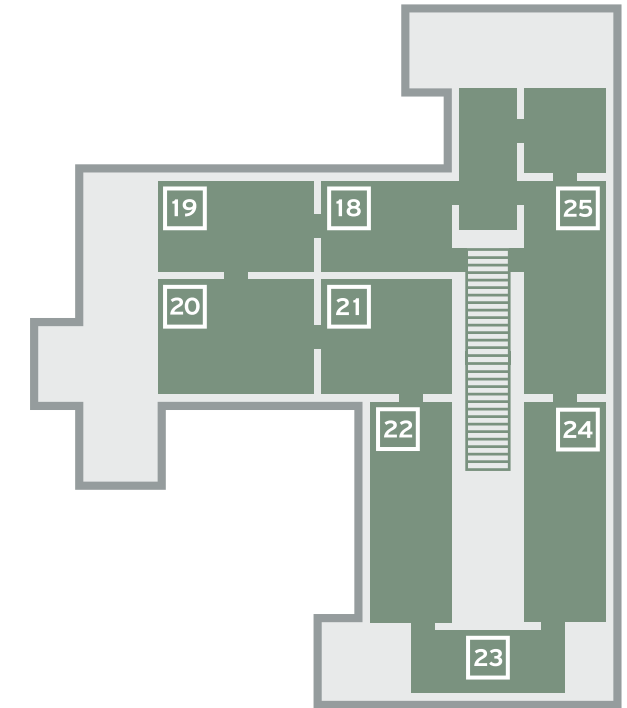
1-7 Temporary Exhibitions

SECOND FLOOR



- 8 Romanticism
- 9 Barbizon School. Realism
- 10 Édouard Manet. Edgar Degas
- 11 Pierre-Auguste Renoir
- 12 Symbolism
- 13 Fin-de-siècle Europe
- 14 Claude Monet
- 15 Paul Cézanne
- 16 Vincent Van Gogh. Neo-Impressionism
- 17 Paul Gauguin

THIRD FLOOR



- 18 Les Nabis
- 19 Fauvism
- 20 Henri Matisse
- 21 Pablo Picasso
- 22 Henri Rousseau and André Derain
- 23 School of Paris
- 24 20th-Century European Art
- 25 Fernand Léger and Renato Guttuso